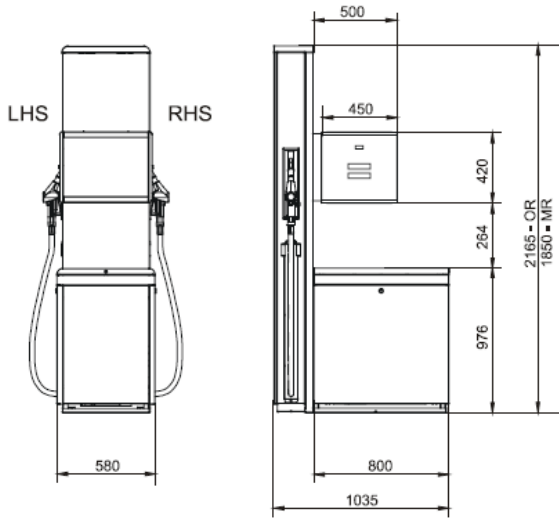


Overall Dimensions 1 Product, 2 x 70 l/min, with 2 x GPU 90
With Vap. Rec. & Preset

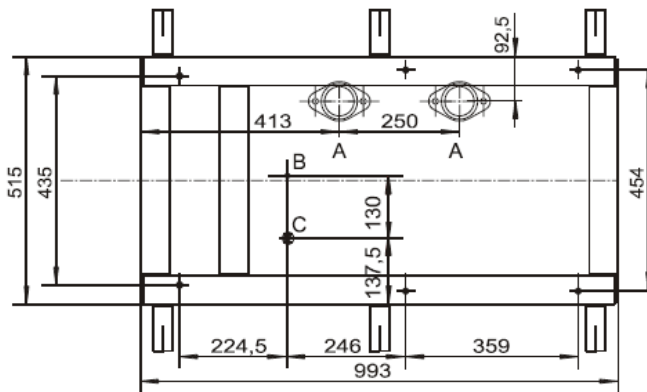


Valid only for C+ and Ecometer versions, Not for Multiplexed Ecometer

All Dimensions in Millimetres

Option: Suction connection kit
140 826 683 without cathodic protection
140 826 693 with cathodic protection

Footprint Details Right Side of Dispenser (RHS)



Subframe
Part No. - 140 757 182

Key to Symbols
A - Grade 1
B - Cable Riser
C - Vapour Recovery

Left Side of Dispenser (LHS) ****It is recommended that Vapour Recovery return pipes are installed where this is may be a future requirement.**

Module Configuration

Right Hand Side of Dispenser

